

'StarLight' Star Steering System



FEATURES

This novel system frees the helm from having to peer down at a compass. The display bar is mounted, ideally, at horizon level and maintains a 'fixed' point to steer for. This means the helm person can see the direction to steer while allowing continuous look-out.

The A5600 system has two parts:
the A5610 Control Unit and
the A5620 Display Bar.

- A 'Star to Steer By'
- 'head-up' horizon-level Helming Aid
- Helps keep horizon look-out
- IP68
- 10-15V Supply
- Easily mounted—fixings included
- 660mm display length
- Adjustable brightness
- Variable width adjustment

ABSOLUTE MAXIMUM RATINGS

PARAMETER	DESCRIPTION	NOTES	CONDITIONS	VALUE	UNIT
Q _{STOR}	Storage Temp Range			-20 to +100	°C
Q _{OPER}	Operating Temp Range			-20 to +65	°C
	Shock Resistance		Single impact	±200	G
	Climate Test		+71°C, 95% Humidity -20°C, 85% Humidity	6	Hours
V _{CC}	Supply Voltage			15	Vdc
P _{MAX}	Operating Pressure Range			-2 to +2	Bar

MECHANICAL

DESCRIPTION	NOTES	CONDITIONS	TYPICAL VALUE	UNIT
Dimensions			See Drawing	
Sensor Mounting			Horizontal	
Cable Length		A5620 A5610 power	4 3	m
Weather Resistance			Sealed to IP68	

ORDER INFORMATION

PART	DESCRIPTION
A5600	0183 StarSteering

ELECTRICAL CHARACTERISTICS AT 20°C

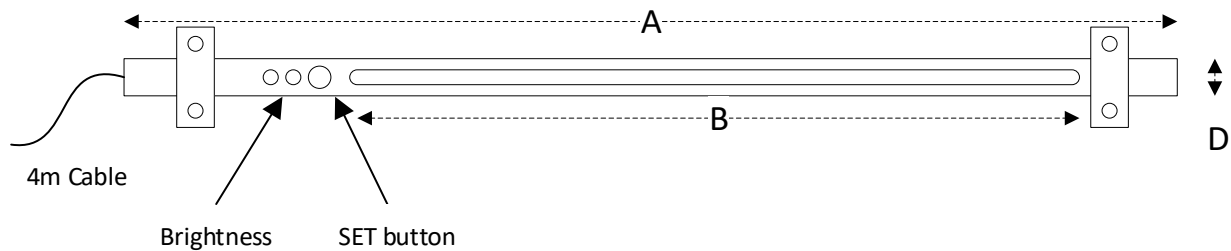
PARAMETER	DESCRIPTION	NOTES	MIN	TYP	MAX	UNIT
V _{CC}	Supply Voltage		8	12	15	Vdc
I _{CC}	Current consumption	Higher when bright	40	70	200	mA

SETUP

There is an adjustment control inside the A5610 Control Unit which can scale the display so the distance to the helm can be set.



MOUNTING



A	910mm	Total length of tube
B	668mm	Length of display
C	50mm	Width of mounting blocks supplied
D	25mm	Diameter of tube